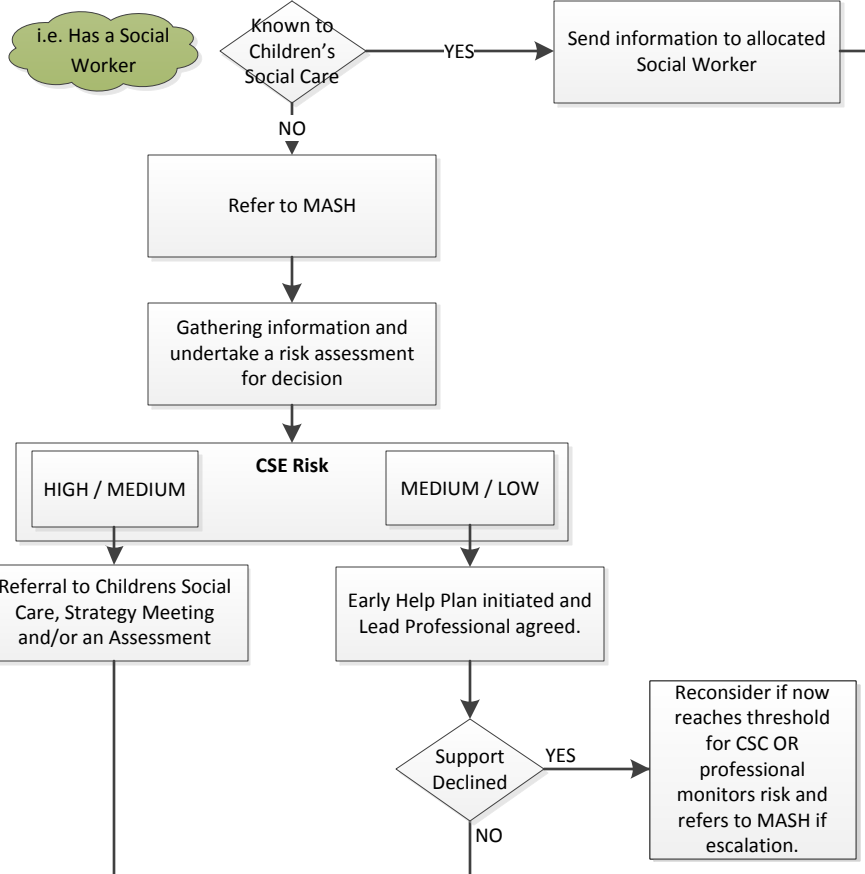
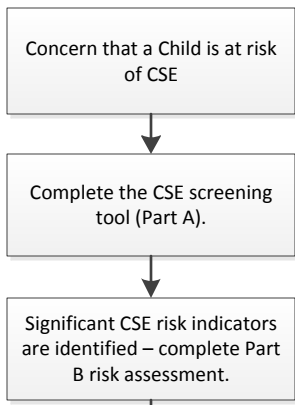


Child Sexual Exploitation (CSE) High Level Flowchart



Definitions

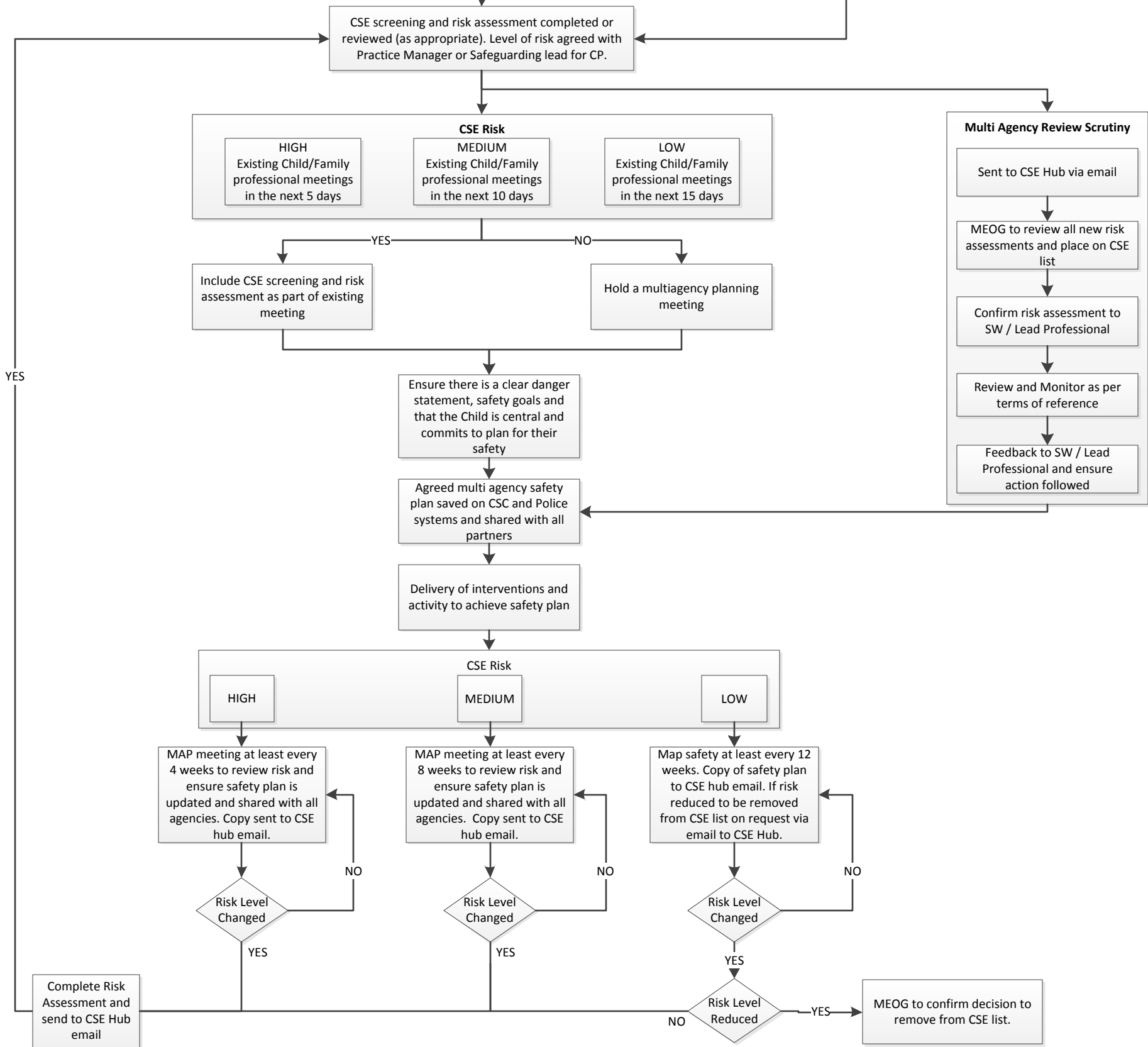
High Risk
Screening and risk assessment indicates evidence that the child is actively being sexually abused. Should be Level 4 on Continuum of Need and subject to a Children's Social Care intervention.

Medium Risk
Screening and Risk Assessment indicates evidence that the child may be being sexually abused or at significant risk of exploitation. Levels 3/4 on the Continuum of Need with a Social Worker or named Lead professional.

Low Risk
Screening and Risk Assessment indicates evidence that this child may be vulnerable to exploitation and sexual abuse. Level 3/2 on the continuum of Need and has a named Lead Professional.

Multi Agency Planning (MAP) Meetings
Can be part of Child Protection, Child In Need, Child Looked After meetings if in place but need to ensure that safety plan and risk plan specific to CSE risks are reviewed and shared.

MEOG
Multiagency missing and exploitation operational group.



Multi Agency Review Scrutiny

```

    graph TD
      A[Sent to CSE Hub via email] --> B[MEOG to review all new risk assessments and place on CSE list]
      B --> C[Confirm risk assessment to SW / Lead Professional]
      C --> D[Review and Monitor as per terms of reference]
      D --> E[Feedback to SW / Lead Professional and ensure action followed]
  
```